

**Preliminary**

## Coaxial Combiner/ 915MHz 2 way Combiner

### RIW09-AB010

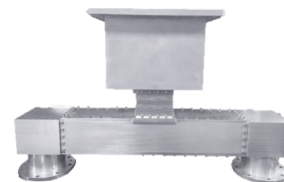
**RFHIC**

#### Product Features

- 2 way combiner
- 4-1/16 & WR975 interface
- High Power rating
- Water cooling

#### Applications

- High power SSPA combining
- CVD M/W source combining
- Plasma M/W source combining
- Microwave heating, dry & sintering



#### Description

The RIW09-AB010, 2 way combiner is designed for the high power SSPA combining application. The RIW09-AB010 was applied to RFHIC 60kW Generators, RIK0960K-40TD.

#### Electrical Specifications

PARAMETER	UNIT	SPECIFICATION
Operating Frequency	MHz	900 ~ 930
Insertion Loss <sup>1</sup>	dB	< 0.3
Amplitude Balance	dB	± 0.2
Phase Balance	°	± 2
Output Return Loss	dB	20
Power handling each Input	kW	CW 30

<sup>1</sup> This value includes adapter loss.

#### Mechanical Specifications

PARAMETER	UNIT	VALUE
Dimensions(W x D x H)	mm	764 x 212.7 x 469.2
RF Input / Output Interface	-	4-1/16 / WR975
Weight	kg	Max. 20
Water cooling interface		1/4PT
Material / Surface finish	-	Al / Chromate



#### Certification

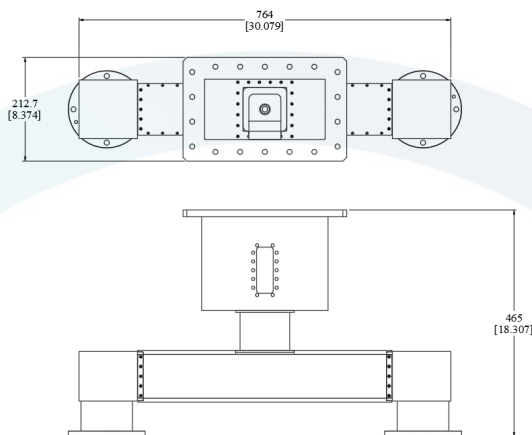
This product is manufactured by a company that is certified for the AS9100D quality management system.

**Preliminary**  
**Coaxial Combiner/ 915MHz 2 way Combiner**  
**RIW09-AB010**



## Dimensions

Unit: mm[inch]



### Note

\* Specifications are subject to change without notice.

## Option

1. 4-1/16 to WR975 adapter
2. Din(F) to WR975 adapter
3. WR975 directional coupler
4. Mounting fixture for 19" Rack

## Revision History

Part Number	Release Date	Version	Description	Data Sheet Status
RIW0930K	13 <sup>th</sup> Oct. 2021	0.1	1 <sup>st</sup> release	Preliminary

RFHIC Corporation reserves the right to make changes to any products herein or to discontinue any product at any time without notice. While product specifications have been thoroughly examined for reliability, RFHIC Corporation strongly recommends buyers to verify that the information they are using is accurate before ordering. RFHIC Corporation does not assume any liability for the suitability of its products for any particular purpose, and disclaims any and all liability, including without limitation consequential or incidental damages. RFHIC products are not intended for use in life support equipment or application where malfunction of the product can be expected to result in personal injury or death. Buyer uses or sells such products for any such unintended or unauthorized application, buyer shall indemnify, protect and hold RFHIC Corporation and its directors, officers, stockholders, employees, representatives and distributors harmless against any and all claims arising out of such unauthorized use.

Sales, inquiries and support should be directed to the local authorized geographic distributor for RFHIC Corporation. For customers in the US, please contact the US Sales Team at +1-919-677-8780. For all other inquiries, please contact the International Sales Team at +82-31-8069-3000.